

THE COLLECTOR'S GALLERY

CHECKLIST



Installed in the Collector's Gallery are 73 rare and important art objects from the Two Red Roses Foundation collection. This gallery, adjacent to the Banquet Hall, is a permanent museum gallery open to events participants and is the only art gallery where drinks are allowed. An illustrated checklist is provided in the following pages. While sipping your cocktails, please enjoy this wonderful, private mini-museum.

WEST WALL



Landscape from the Air, 1919
Gertrude Fiske, American, 1879-1961
Oil on canvas
17 1/8 x 21 1/8 inches



Maine in Winter, 20th century
Gertrude Fiske, American, 1879-1961
Oil on canvas
30 x 36 inches



A Brown Study, 1913
Gertrude Fiske, American, 1879-1961
Oil on canvas
36 1/2 x 30 1/4 inches



Portrait of Emil Carlsen, c. 1884
Frank Duveneck, American, 1848-1919
Oil on canvas
40 x 30 inches



Late Summer, c. 1900
John Joseph Enneking, American, 1841-1916
Oil on canvas
25 x 30 inches



Red and Gold, late 19th to early 20th century
John Joseph Enneking, American, 1841-1916
Oil on canvas
24 x 30 1/2 inches

NORTH WALL



Oak Tree on a Hillside, late 19th to early 20th century
John Joseph Enneking, American, 1841-1916
Oil on board
10 x 14 inches



Yellow Flowers, Ipswich, c. 1905
Arthur Wesley Dow, American, 1857-1922
Oil on canvas
18 x 24 inches



Flood Tide, Ipswich Marshes, Massachusetts, 1917
Arthur Wesley Dow, American, 1857-1922
Oil on canvas
18 x 32 inches



Autumn Sketch, c. 1907
Arthur Wesley Dow, American, 1857-1922
Oil on canvas
14 x 20 inches



Autumn, late 19th to early 20th century
Arthur Wesley Dow, American, 1857-1922
Oil on canvas
14 x 20 inches



The Blue Dragon, Ipswich, c. 1911-1920
Arthur Wesley Dow, American, 1857-1922
Oil on board
9 1/4 x 15 1/2 inches



Summer Landscape, early 20th century
Emil Carlsen, American (born Denmark), 1853-1932
Oil on panel
18 x 15 ½ inches



Camp at Night, 1923
Eanger Irving Couse, American, 1866-1936
Oil on board
12 x 16 inches



The Pottery Maker, 1923
Eanger Irving Couse, American, 1866-1936
Oil on canvas
30 x 36 inches



Blossoms, c. early 1880s
Childe Hassam, American, 1859-1935
Oil on canvas
8 x 10 inches



High Road along a Stream, 1882
Childe Hassam, American, 1859-1935
Oil on canvas
14 ¾ x 22 inches



Apple Blossoms and Pink Moon, c. 1884
Childe Hassam, American, 1859-1935
Oil on canvas
16 x 20 inches



Beach at Far Rockaway, late 19th to early 20th century
Edward Henry Potthast, American, 1857-1927
Oil on canvas
24 x 30 inches



A Day at the Beach, late 19th to 20th century
Edward Henry Potthast, American, 1857-1927
Oil, canvas, board
12 x 16 inches



Bathers in the Surf, late 19th to 20th century
Edward Henry Potthast, American, 1857-1927
Watercolor and pencil on paper
6 x 7 inches



Children in the Park, c. 1907-1910
Maurice Brazil Prendergast, American (born Canada), 1858-1924
Oil on canvas
20 x 24 inches



Girls on the Beach, c. 1915-1916
Maurice Brazil Prendergast, American (born Canada), 1858-1924
Watercolor, pastel and pencil on paper
11 ½ x 7 ¾ inches



Early Spring, Milton, 20th Century
Aldro Thompson Hibbard, American, 1886-1972
Oil on canvas board
11 x 9 inches

EAST WALL



Study for *The Arts*, c. 1914
Arthur Frank Mathews, American, 1860-1945
Gouache and graphite on paper
26 $\frac{3}{4}$ x 16 $\frac{1}{2}$ inches



Study for *The Soil*, c. 1903
Arthur Frank Mathews, American, 1860-1945
Oil on canvas
30 $\frac{1}{4}$ x 29 inches



***Allegories of Music*, music cabinet, c. 1900**
Arthur Frank Mathews, American, 1860-1945, painter
Unknown, cabinet maker
Wood, gilt, oil on wood panels
39 $\frac{1}{8}$ x 23 $\frac{1}{8}$ x 23 $\frac{1}{2}$



***Landscape*, late 19th to early 20th century**
William Merritt Post, American, 1856-1935
Watercolor on paper
8 x 10 inches



***North Church, Amsterdam*, late 19th to early 20th century**
Johannes Frederik Hulk II, Dutch, 1855-1913
Oil on panel
7 x 8 $\frac{1}{2}$ inches



***Young Woman in a White Dress with a Lily*, late 19th to early 20th century**
Mary Lizzie Macomber, American, 1861-1916
Oil on panel
7 $\frac{7}{8}$ x 4 inches

SOUTH WALL



***Russian Woman*, c. 1920**
Daniel Sayre Groesbeck, American, 1878-1950
Gouache, watercolor and charcoal on paper and board
26 x 22 $\frac{3}{4}$ inches



***Tapestries of Twilight*, c. 1910-1911**
Elizabeth Shippen Green, American, 1871-1954
Oil on board
23 $\frac{13}{16}$ x 15 $\frac{1}{4}$ inches



***On the Bayou*, 20th century**
Alice Ravenel Huger Smith, American, 1876-1958
Watercolor on paper
10 $\frac{1}{4}$ x 13 $\frac{3}{4}$ inches



***Vase with mushrooms*, c. 1910**
Frederick Hurten Rhead, American (born England), 1880-1942, and Agnes Marie Rhead, English, b. 1877, designers and makers
Academy of Fine Arts, People's University, University City, MO, manufacturer
Glazed earthenware
6 $\frac{1}{2}$ inches height



***Vase with ship*, c. 1911-1913**
Albert Robert Valentien, American, 1862-1925, and Anna Marie Valentien, American, 1862-1947, designers and makers
Valentien Pottery Company, San Diego, CA, manufacturer
Glazed earthenware
11 $\frac{3}{8}$ inches height



***Bowl*, early 20th century**
Dedham Pottery, Dedham, MA, manufacturer
Glazed stoneware
5 $\frac{3}{4}$ inches diameter



Toadstool plate, early 20th century
Dedham Pottery, Dedham, MA,
manufacturer
Glazed stoneware
6 3/8 inches diameter



Poppy plate, early 20th century
Dedham Pottery, Dedham, MA,
manufacturer
Glazed stoneware
8 1/2 inches diameter



Vase, early 20th century
School of Marblehead Potteries,
Marblehead, MA, manufacturer
Glazed stoneware
8 1/2 inches height



Ram tile, early 20th century
Russell Gerry Crook, American,
1869-1955, designer and maker
Salt-glazed stoneware
6 inches square



Vase with leaves, c. 1900-1909
Attributed to Ruth T. Erickson, American,
1883-after 1932, maker
Grueby Pottery, Boston, MA, manufacturer
Glazed earthenware
9 inches height



**Vase with leaves and buds (model no. 23),
c. 1898-1900**
Attributed to George Prentiss Kendrick, American,
1850-1919, designer
Wilhelmina Post, American, b. 1867, maker
Grueby Faience Company, Boston, MA, manufacturer
Glazed earthenware
10 7/8 inches height



Vase, 1903
Arthur Eugene Baggs, American,
1886-1947, designer and maker
Alfred University, Alfred, NY,
manufacturer
Glazed earthenware
5 1/4 inches height



Vase with geometric design, c. 1910
Arthur Eugene Baggs, American,
1886-1947, designer
Sarah W. Tutt, American, 1859-1947,
maker
Marblehead Potteries, Marblehead,
MA, manufacturer
Glazed earthenware
3 1/2 inches height



Vase with geometric design, c. 1907-1910
Maude Milner, American (born England), c. 1870,
designer
Sarah W. Tutt, American, 1859-1947, maker
Marblehead Potteries, Marblehead, MA,
manufacturer
Glazed earthenware
4 3/8 inches height



Vase with a lizard, c. 1914-1917
Frederick Hurten Rhead, American (born England),
1880-1942, designer and maker
Rhead Pottery, Santa Barbara, CA, manufacturer
Glazed earthenware
7 1/2 inches height



Pig plate, 1911
Paul Revere Pottery, Boston, MA,
manufacturer
Glazed earthenware
8 3/4 inches diameter



Daughters of the House, 1904
Helen Hyde, American, 1868-1919
Watercolor on paper
19 x 12 inches



Clouds and Water, before 1921
Hermann Dudley Murphy, American, 1867-1945
Oil on canvas
30 x 40 ½ inches framed



Candlesticks (model no. C-42), c. 1910-1912
Attributed to Karl Kipp, American, 1881-1954, designer
Roycroft Shops, East Aurora, NY, manufacturer
Copper and German silver
8 ¼ x 5 x 5 inches (each)



Vase (model no. 77), c. 1915-1930
Marie Zimmermann, American, 1879-1972, designer and maker
Copper
7 ⅝ inches



Vase with decoration of German silver (model no. 203), c. 1924-1925
Victor Toothaker, American, 1882-1932, designer
Roycroft Shops, East Aurora, NY, manufacturer
Copper, German silver
6 inches height



Vase (model no. C-60), c. 1910-1912
Roycroft Shops, East Aurora, NY, manufacturer
Copper, German silver
7 1/8 inches height



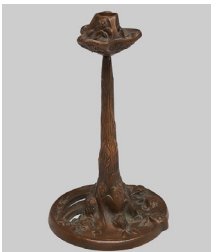
Tray, c. 1915-1933
Dirk van Erp, American (born Netherlands), 1860-1933, designer and maker
Dirk van Erp Studios, San Francisco, CA, manufacturer
Copper
8 ¼ x 11 x 6 ¼ inches



Serving tray with spade motif, c. 1906
Craftsman Workshops, Eastwood, NY, designer
Onondaga Metal Shops/Benedict Art Studios, Syracuse, NY, manufacturer
Copper
1 x 14 ⅞ x 14 ⅞ inches



Hammered copper jewel box with silver lock and trimmings, c. 1911-1912
Roycroft Shops, East Aurora, NY, manufacturer
Copper, German silver, brass, suede
6 ¾ x 3 ½ x 2 ½ inches



Candlestick (no. 2), c. 1900-1908
Jessie M. Preston, American, 1873-1962, designer and maker
Bronze
12 x 7 inches



Candlestick (model no. 11), c. 1905-1917
Robert R. Jarvie, American, 1865-1941, designer and maker
The Jarvie Shop, Chicago, IL, manufacturer
Patinated bronze
10 1/8 inches height



Smokers' set (model no. C-34 variant), c. 1910-1912
Karl Kipp, American, 1881-1954, designer
Roycroft Shops, East Aurora, NY, manufacturer
Copper, German silver
6 ½ x 5 ½ x 5 ½ inches (humidor);
12 ¾ x 8 x 1 ½ inches (tray);
3 ¾ x 5 ½ x 3 ¾ inches (match holder)



May Day, c. 1915
Sarah Agnes Estelle Irvine, American, 1887-1970
Watercolor on paper
29 x 17 inches



Irises, 20th century

Sarah Agnes Estelle Irvine, American,
1887-1970
Watercolor on paper
11 x 18 ¼ inches



Mary Rosenblatt and her Younger Sister Ellen, c. 1924-1928

Sarah Agnes Estelle Irvine, American,
1887-1970
Watercolor on paper
13 ½ x 9 inches



Oak tree with Spanish moss, 20th century

Sarah Agnes Estelle Irvine,
American, 1887-1970
Watercolor on paper
10 ¾ x 8 ¾ inches



Vase, 1924

Sarah Agnes Estelle Irvine, American, 1887-1970,
designer and decorator
Joseph Fortune Meyer, American,
1848-1931, maker
Newcomb Pottery, New Orleans, LA, manufacturer
Glazed earthenware
10 ¾ inches height



Mushrooms, 20th century

Sarah Agnes Estelle Irvine, American,
1887-1970
Watercolor on paper
9 x 12 inches



Landscape, 1918

Sarah Agnes Estelle Irvine, American, 1887-1970,
decorator
Newcomb Pottery, New Orleans, LA, manufacturer
Glazed earthenware
Both: 10 x 6 inches



Boudoir set (lamps and clock), c. 1916

Sarah Agnes Irvine, American, 1887-1970, designer
Joseph Fortune Meyer, American, 1848-1931, maker
Newcomb Pottery, New Orleans, LA, manufacturer
Duverdrey & Bloquel, Saint-Nicolas-d'Aliermont,
France, manufacturer (clock movement)
Glazed earthenware, metal fittings, clock movement
19 ½ X 9 inches diameter (lamps each);
8 ½ X 7 5/8 X 2 ½ inches (clock)



Newcomb Chapel Fountain, 1930

Sarah Agnes Estelle Irvine, American,
1887-1970, decorator
Newcomb Pottery, New Orleans, LA,
manufacturer
Glazed earthenware
Both: 10 x 6 inches



Wild Clematis, 20th century

Sarah Agnes Estelle Irvine, American,
1887-1970
Watercolor on paper
9 x 12 inches



Vase, c. 1910-1912

Sarah Agnes Estelle Irvine, American,
1887-1970, designer and decorator
Joseph Fortune Meyer, American, 1848-1931,
maker
Newcomb Pottery, New Orleans, LA,
manufacturer
Glazed earthenware
4 ½ inches height



Vase, 1918

Sarah Agnes Estelle Irvine, American,
1887-1970, designer and decorator
Joseph Fortune Meyer, American,
1848-1931, maker
Newcomb Pottery, New Orleans, LA,
manufacturer
Glazed earthenware
4 ½ inches height

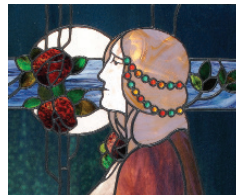


Untitled, c. 1920s

Sarah Agnes Estelle Irvine, American,
1887-1970
Watercolor and pencil on board
19 x 13 inches



Tall Trees of California, 1915, Karl Schmidt, American, 1890-1962, Oil on Board, 14 x 30 inches



355 4TH STREET NORTH, ST. PETERSBURG, FLORIDA